

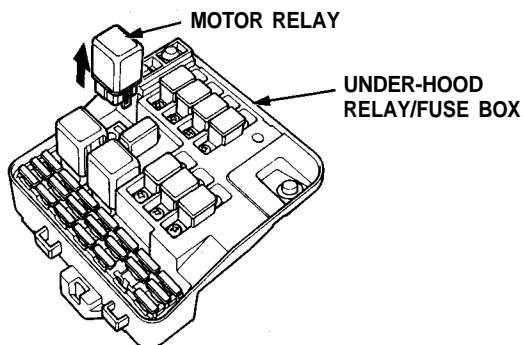
Problem code 1-2: Pump Motor Circuit Problem

CAUTION: Use only the digital multimeter to check the system.

NOTE: If a malfunction is detected, this code appears and the fail-safe function is activated. The indicator light comes ON after restarting the engine until the malfunction code is erased (by disconnecting the ABS 2 fuse for 3 seconds).

Pre-test steps:

- Check ABS MOTOR (50A) FUSE
- Check No.3 (15A) FUSE
- Check ABS UNIT (7.5A) FUSE



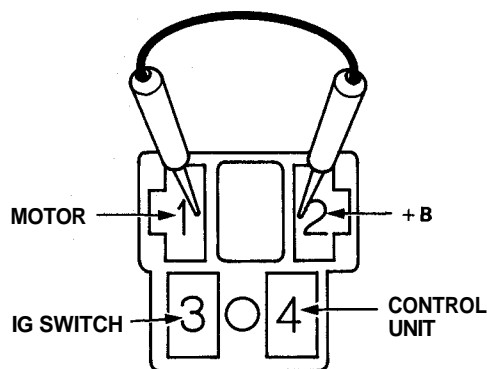
Remove and check the pump motor relay (page 19-80).

Does it work properly? NO

YES

Faulty pump motor relay.

Connect the No. 1 and No.2 terminals using a jumper wire.



View from under-hood relay/fuse box terminal side.

Does the pump motor run? NO

YES

(To page 19-57)

Disconnect the jumper wire.

Disconnect the 2-P connector from the pump motor.

(To page 19-56)

(cont'd)

Troubleshooting

Flowcharts (cont'd)

(From page 19-55)

Remove the ABS UNIT (7.5A) fuse from under-hood relay/fuse box.

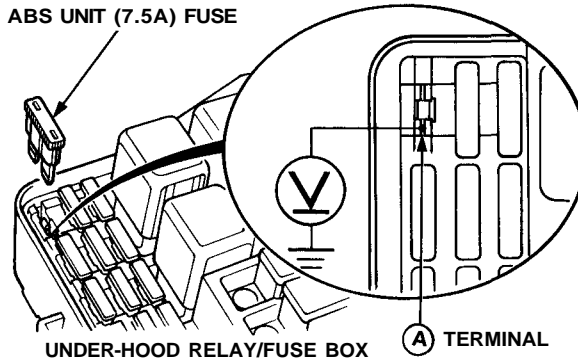
Turn the ignition switch ON.

Check for voltage between the under-hood relay/fuse box ABS unit fuse A terminal and body ground.

Is there battery voltage?

NO

ABS UNIT (7.5A) FUSE



UNDER-HOOD RELAY/FUSE BOX

A TERMINAL

Repair open in WHT/BLU wire between the ABS unit fuse and control unit.

YES

Reinstall the fuse to the under-hood relay/fuse box.

Check for voltage between the pump motor relay No.1 terminal (+) and body ground (-).

Is there battery voltage?

NO

Faulty under-hood relay/fuse box.

YES

Check for voltage between the No.3 terminal and body ground.

Is there battery voltage?

ON

Repair open in YEL/BLK wire between the fuse and pump motor relay.

YES

Reinstall the pump motor relay.

Disconnect the 18-P connector from the control unit.

Check for voltage between the control unit connector No. 18 (YEL/RED) terminal and body ground.

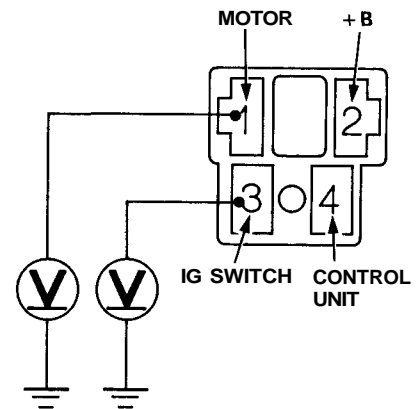
Is there battery voltage?

ON

Repair open in YEL/RED wire between the pump motor relay and control unit.

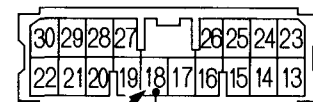
YES

Check for loose control unit connectors. If necessary, substitute a known-good control unit and recheck.



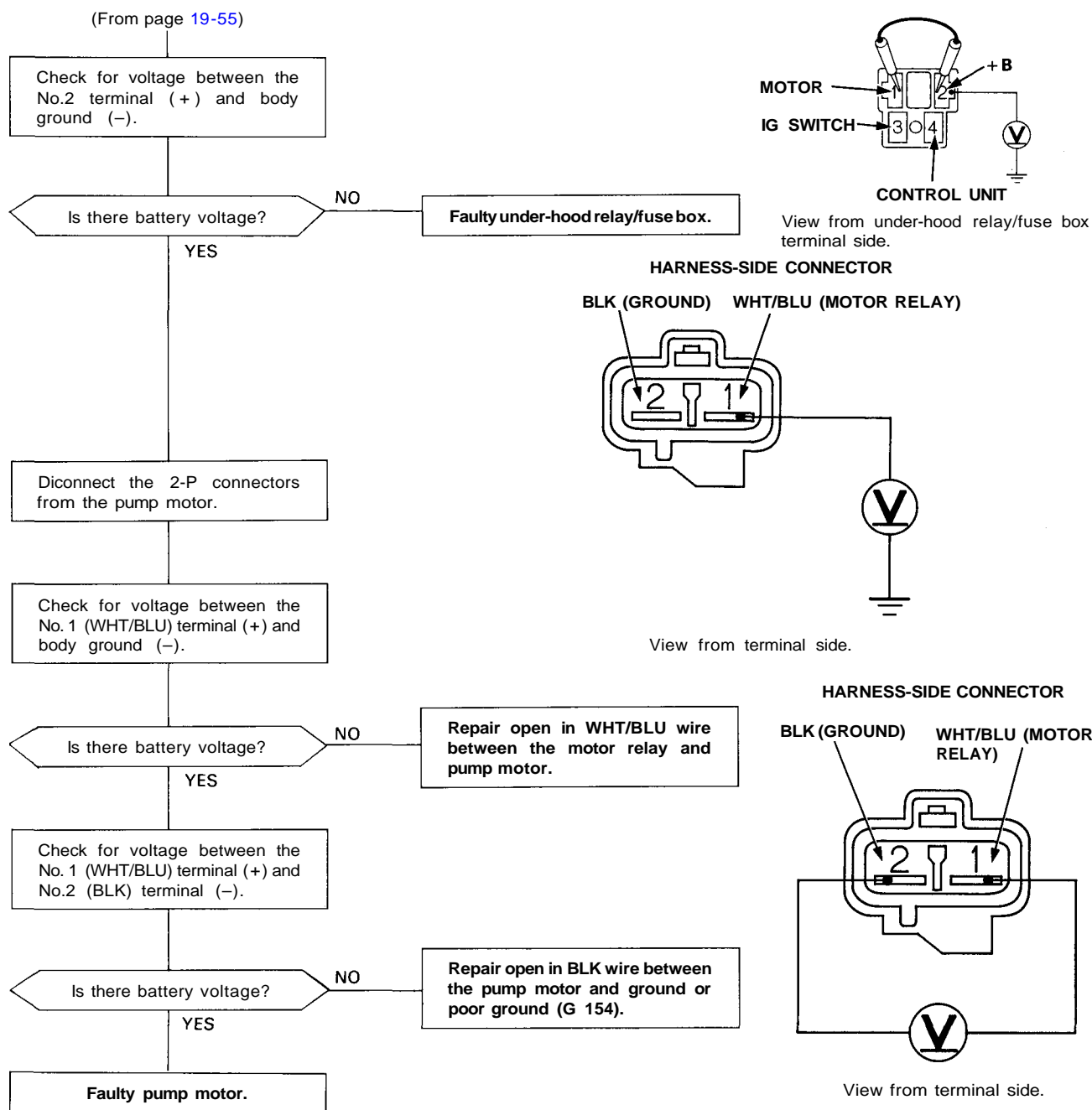
View from under-hood relay/fuse box terminal side.

18-P CONNECTOR



YEL/RED (PMR)

View from control unit terminal side.



(cont'd)